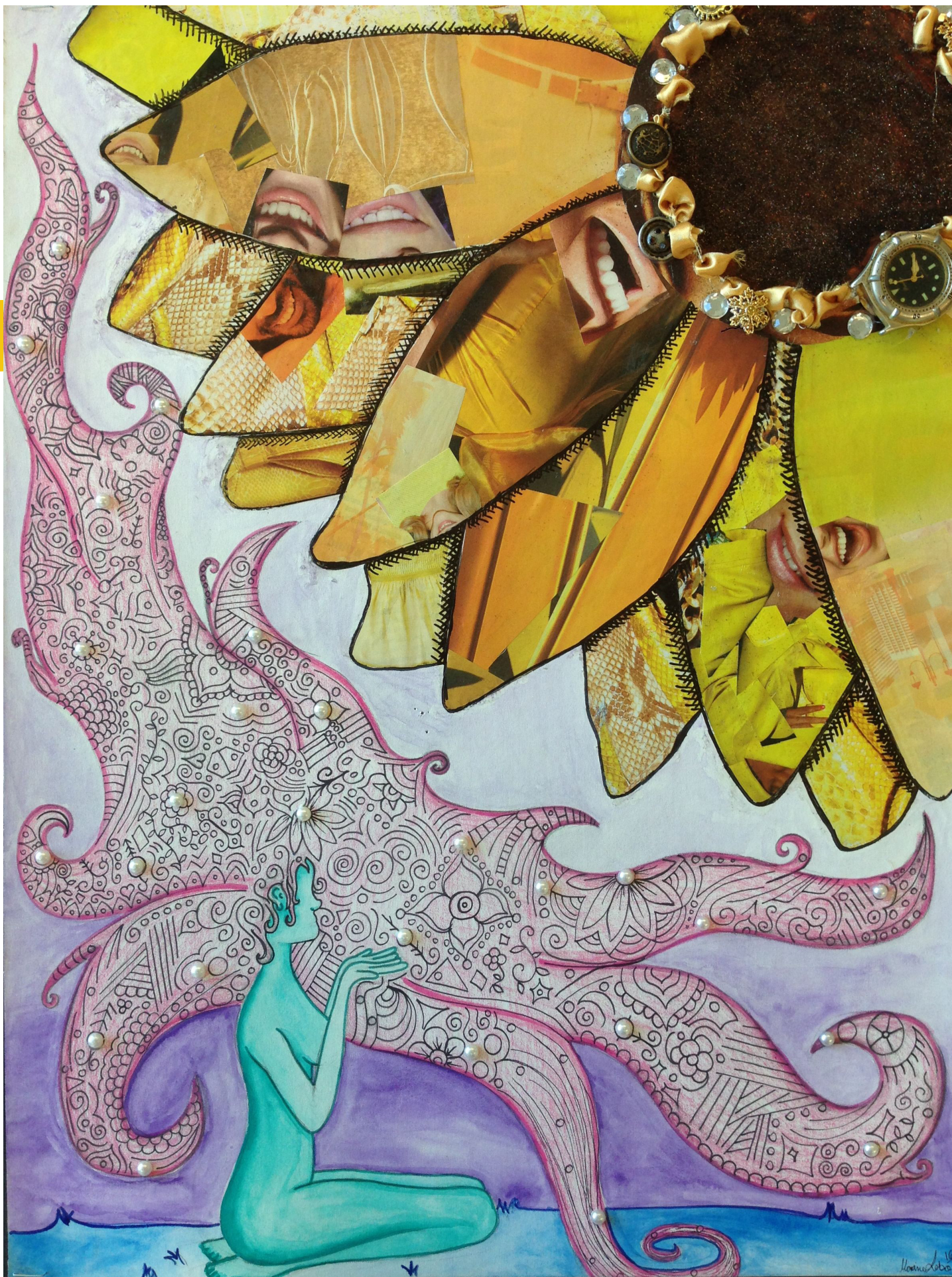




REPORT

TO THE COMMUNITY



"Pearl" by Maxine Lebo

WHO WE ARE:

"ENSURING PERSONAL EXCELLENCE FOR ALL STUDENTS"

VISION

The Lloydminster Public School Division has a shared commitment with parents and the community to create a safe and caring learning environment in order to prepare students to be inspired learners and productive citizens.

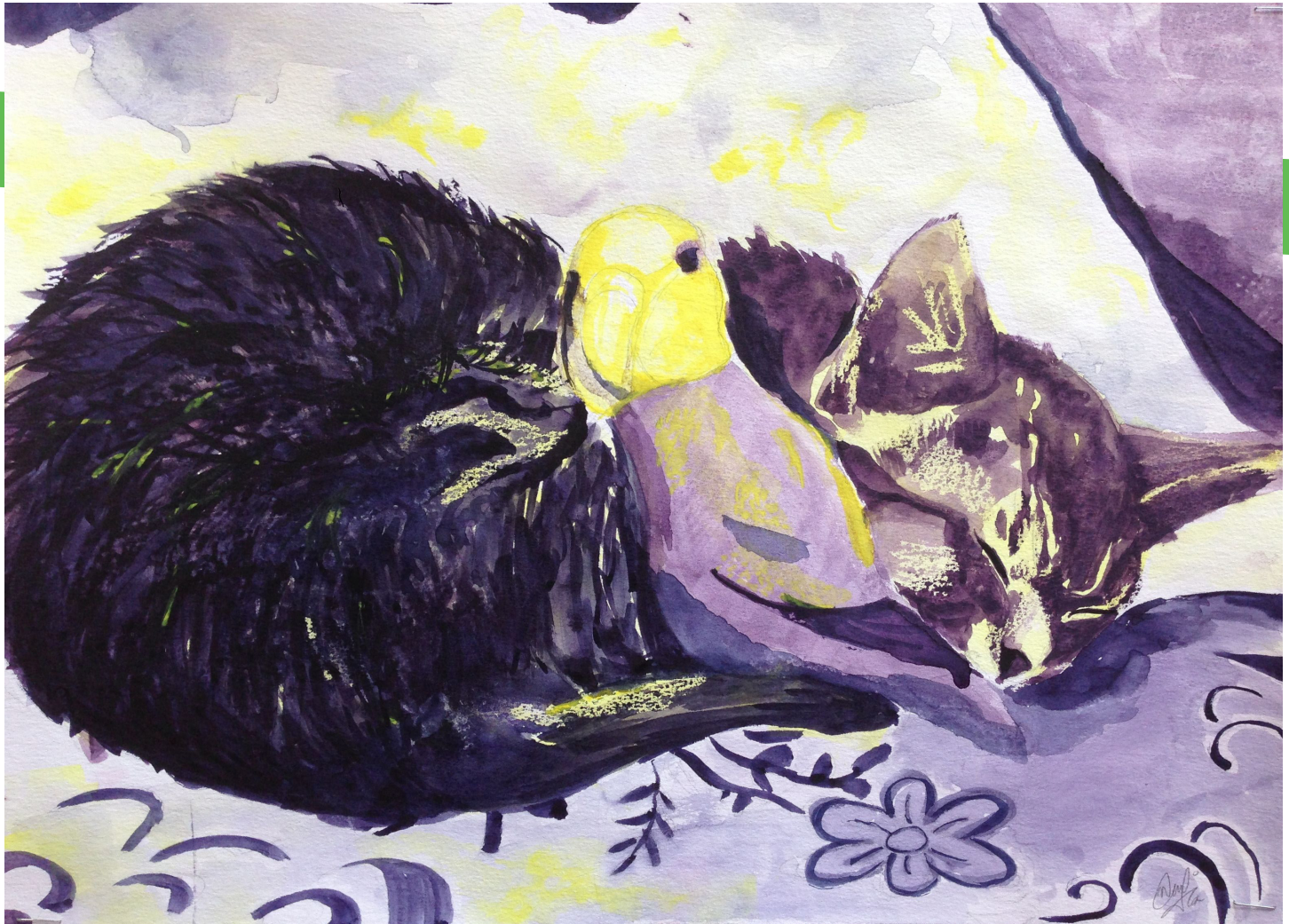
VALUES

- Respect for Diversity
- Care for themselves and others
- Respect for authority, property and the environment
- Continuous improvement
- Excellence in all they do
- Leadership in making positive choices
- Accountability for their choices and actions
- Collaborative Relationships

BELIEFS

We believe:

- All students can achieve personal excellence given sufficient time and the right supports
- High expectations and early and ongoing interventions are essential
- All staff can perform to high standards given the right assistance
- All staff can articulate what they do and why they perform the way they do



"I'm a Pretty Parrot" by Nazia Munir

CONTENT:

Current LPSD School Information	6
Message from the Board Chair	8
Message from the Director of Education	10
OUR PRIORITIES	
Wellness	14
Literacy	16
Communications	17
A SNAPSHOT OF 2015-16	
Academics	22
Programming	32
Relationships	34
Profile	36
Governance	38
Facilities and Transportation	40
Finances	42

OUR SCHOOLS:



AVERY OUTREACH SCHOOL

Phone: (306) 825-9088

Address: 4111-48 Ave., SK

Find them Online:

<http://avery.lpsd.ca> • @AveryOutreach • [facebook.com/AveryOutreachLPSD](https://www.facebook.com/AveryOutreachLPSD)



BARR COLONY SCHOOL

Phone: (780) 875-4054

Address: 3103-52 Ave., AB

Find them Online:

<http://barrcolony.lpsd.ca> • @BarrColony • [facebook.com/BarrColonyLPSD](https://www.facebook.com/BarrColonyLPSD)



BISHOP LLOYD MIDDLE SCHOOL

Phone: (780) 875-6239

Address: 5524-31 St., AB

Find them Online:

<http://bishoplloyd.lpsd.ca> • @BishopLancers • [facebook.com/BishopLloydLPSD](https://www.facebook.com/BishopLloydLPSD)



COLLEGE PARK SCHOOL

Phone: (780) 875-7518

Address: 2115-56 Ave., AB

Find them Online:

<http://collegepark.lpsd.ca> • @CollegeParkLPSD • [facebook.com/CollegeParkLPSD](https://www.facebook.com/CollegeParkLPSD)



E.S. LAIRD MIDDLE SCHOOL

Phone: (306) 825-8826

Address: 4808-45 Ave., SK

Find them Online:

<http://eslaird.lpsd.ca> • @ESLaird • [facebook.com/ESLairdLPSD](https://www.facebook.com/ESLairdLPSD)

Within LPSD, there are 10 schools. We have five elementary schools, two middle schools, one Kindergarten to Grade 9 school, one outreach school and one high school, all of which house approximately 4,200 students.

JACK KEMP COMMUNITY SCHOOL

Phone: (306) 825-9394
Address: 3701-47 Ave., SK

Find them Online:

<http://jackkemp.lpsd.ca> • @JackKempSchool • facebook.com/JackKempLPSD



LLOYDMINSTER COMPREHENSIVE HIGH SCHOOL

Phone: (780) 875-5513
Address: 5615-42 St., AB

Find them Online:

<http://lchs.lpsd.ca> • @LloydComp • facebook.com/LloydComp



QUEEN ELIZABETH SCHOOL

Phone: (780) 875-5090
Address: 5512-51 Ave., AB

Find them Online:

<http://queenelizabeth.lpsd.ca> • @QEKnight • facebook.com/QueenElizabethLPSD



RENDELL PARK ELEMENTARY SCHOOL

Phone: (780) 875-7278
Address: 3401-57 Ave., AB

Find them Online:

<http://rendellpark.lpsd.ca> • @RPRoadrunners • facebook.com/RendellParkLPSD



WINSTON CHURCHILL SCHOOL

Phone: (306) 825-2626
Address: 4402-27 St., SK

Find them Online:

<http://winstonchurchill.lpsd.ca> • @WinstonWilly • facebook.com/WinstonChurchillLPSD



MESSAGE FROM THE BOARD CHAIR



DAVID THOMPSON
BOARD CHAIR

This Report provides a brief overview of the work of LPSD for the fiscal year Sept. 1, 2015 to Aug. 31, 2016. Snapshots and highlights provide insights into the division's governance, facilities, programs and more importantly, the experiences of our students. Detailed information indicates how the system is resourced, how the resources are spent and the results achieved. We invite you to examine carefully the goals set by the board, the actions taken by our staff and the results reported. Feedback and questions regarding any aspect of this report are welcomed.

In this report, we reference the Education Sector Strategic Plan goals, which apply to all 28 Saskatchewan school divisions, and the local priorities set by the LPSD Board of Education. Results measured against those goals give us reason to celebrate the significant progress of our students and to be very proud of the work of our staff and leadership team. Indeed, the growth in literacy and the increase in the high school graduation rate have been quite remarkable. The Ministry has expressed concerns, and rightly so, that Saskatchewan's three-year graduation rates have plateaued, remaining between 73-75% for the past 10 years. However, the steps taken by LPSD have made a significant difference in graduation rates. Our "on time" graduation rates, over the last two years, have been between 80-85% with 89% completing graduation requirement within five years. This places our division among the top three school divisions in Saskatchewan.

The 4157 students (up 79 from the previous year) of the division come from both sides of the provincial border. Historically the ratio has been approximately 60/40 for Alberta to Saskatchewan students with the number of students on the Saskatchewan side, gradually increasing in recent years. These students are served by 10 schools, which follow the Saskatchewan curriculum and are guided by the LPSD Vision, Values and Belief Statements reported in the front of this booklet.

A pupil/teacher ratio of 14.73 provided very desirable class-size averages as follows: K-3, 20 students; Grades 4-6, 22 students; Grades 7-9, 24 students; and Grades 10-12 (core subjects) 25 students.

MEET THE BOARD OF EDUCATION



Karoline Kennedy
Vice-Chair



Cathy Cornet
Trustee



Eric Bloch-Hansen
Trustee



Joy Wareham
Trustee



Chrissy Gee
Trustee



Allan Park
Trustee

Seventy-eight per cent of the \$43 million budget is spent on instruction. The division employs 480 people, of that number 269 (full-time equivalents) are teachers.

We are very grateful for the strong support of our community through over 200 partnerships which range from individuals and small groups to large corporations contributing for the benefit of our students through helping hands, sharing of ideas and/or financial contributions. Of particular note in this regard is a partnership which allowed us to install lights for Armstrong Field at LCHS. The Baron Alumni Association spearheaded a process that brought together generous donations in cash, labour, construction materials and the use of heavy equipment.

Our School Community Councils play an important role as a mechanism for connecting community and school and fostering greater parent involvement. Through the support of Friends of the Performing Arts (FOPA), the number of students who enjoy private music lessons at their own school with minimal disruption to their school day continued to grow from 141 students in November 2014 to 172 students in October 2015.

LPSD enjoys good facilities which have been well maintained. However, the rising cost of maintenance and upgrades for our 10 schools, whose average age is 40 years, continues to be a concern. A few examples of upgrades made during the past year illustrate this point.

- Queen Elizabeth School Roofing (over three years): \$913,000

- Jack Kemp School Portables: \$421,000
- LCHS: \$2,400,000
 - Bus Drop Off/Loading Zone
 - Student Parking Expansion
 - Visitor Parking
 - Entrance and Signage
 - Team Change Rooms
- Rendell Park Elementary School Playground" \$62,000

During this past year, we had opportunity to thank Yana Knight for her contributions to our board as she completed her second term as a trustee. Circumstances prevented her from considering a third term. The October election returned six of the seven trustees giving us the opportunity to welcome a new member to the board, Allan Park. I offer a sincere thank you to my fellow trustees for their tireless work and their commitment to placing the needs of students at the center of decision making. It has been an honour to serve with you.

LOOKING AHEAD

The future for our students looks bright as we continue to build on what has been accomplished this past year. Although we face some new challenges arising from the economic downturn and the governance review launched by the Saskatchewan Government, new challenges also bring new opportunities. We are confident that our staff, our partners and members of the community, who have helped to make this a successful year, will help us meet the challenges and seize the best opportunities that arise from these experiences.

MESSAGE FROM THE DIRECTOR OF EDUCATION



TODD ROBINSON
DIRECTOR OF EDUCATION

The 2015-16 school year certainly gave the Lloydminster Public School Division many reasons to celebrate. Looking back, two quotes have struck me as particularly poignant while reflecting on the gains we have made in our priority areas:

"We are what we repeatedly do. Excellence, therefore, is not an act, but a habit." – Aristotle

"The chains of habit are too weak to be felt until they are too strong to be broken." – Samuel Jackson

In 2014-15, LPSD set supporting and implementing the Education Sector Strategic Plan (ESSP), developing and implementing a communications plan, and enhancing the positive culture within LPSD by focusing on wellness and relationships as priority areas. For 2015-16, those priorities remained unchanged, as there is always room for growth in those areas in order to ensure excellence.

As a division, we are proud to be able to share results from our areas of focus with the community and publicly celebrate the successes our students and staff have made in these priority areas.

SUPPORT AND IMPLEMENT THE EDUCATION SECTOR STRATEGIC PLAN

The two main areas of focus within the ESSP were literacy and graduation rates. LPSD is focused on improving the number of students who are reading at grade level by the end of Grade 3. In 2015-16, 79% of LPSD Grade 3 students finished the year reading at grade level. We have also made literacy from Grades 4 to 9 a focus, work that has ensured many students are experiencing significant improvements in their literacy scores evidenced by our Grade 6 students who have shown 10% growth in their reading levels since June 2014.

As for graduation rates, LPSD was one of only four divisions within Saskatchewan that showed significant improvement in their graduation rates. These results are the culmination of 13 years of formal education and represent more than any other measure the cumulative work of the staff that call LPSD home.

As we move forward, we will continue to move the bar and ensure students are given the right supports to achieve personal excellence.

DEVELOP AND IMPLEMENT A COMMUNICATIONS PLAN

Communications in LPSD has grown to not only be used as a means to celebrate the many accomplishments of staff and students with our community, but it also has become an engagement tool and a teaching tool for our students.

As we move into the 2016-17 school year, we will continue to share our successes from both in and out of the classroom. Continue to check our school and division social media accounts and websites for updates!

ENHANCE THE POSITIVE CULTURE WITHIN LPSD BY FOCUSING ON WELLNESS AND RELATIONSHIPS

LPSD is focused on enhancing the physical and mental wellness of students and staff who call our division home.

Schools have enhanced their processes to ensure students experience a welcoming environment, which enables them to develop the characteristics of a resilient individual. As a system, we are very proud of this work.

While hard data is a great way to measure success, many of our results are difficult, if not impossible, to track. With our focus on Wellness, areas such as development of relationships, improvements in self-esteem, and the growth in a student's connection with a school and class are immensely important and positively inform the formal measures that LPSD does track.

As a Division, I believe we are on the right track and evidence of that can be found in this Report to the Community. We are proud of our staff and students and look forward to continued success in the years to come.



MEET THE LPSD ADMINISTRATION TEAM

Superintendents

Trisha Rawlake, Curriculum and Instruction
Shirley Groat, Curriculum and Instruction
Brent Thomas, Student Services
Scott Wouters, Human Resources

Chief Financial Officer

Matthew Read



"Untitled" by Ryleigh Boyd

OUR PRIORITIES

WELLNESS

Student physical and mental wellness has a strong connection to student achievement and engagement. As such, LPSD has entered into a partnership with founder and Co-Director of the Resiliency Research Centre at Dalhousie University, Dr. Michael Ungar, in order to gain understanding and insight into resiliency for our students.

Through this priority, LPSD is looking to develop more resiliency in students by building opportunities for connection and sense of belonging in the school community, ensuring students are connected to extra-curricular clubs and school teams that provide physical activity opportunities, and ensuring students have healthy food options at school.

The term resiliency most commonly refers to a person's ability to overcome adversity and continue his or her normal development. LPSD has focused on resiliency in its schools by providing students with the school environments necessary to build resiliency. School staffs continue to work with students to ensure they feel a strong connection and engagement with their school and community, and are also providing healthier menu choices at school.

GOALS:

Schools in LPSD will create environments that promote and develop resiliency within students. This includes ensuring resources are available to support student mental health, and an increased focus on ensuring students have opportunities to improve their physical wellness in elementary, middle and high school.

ACTIONS:

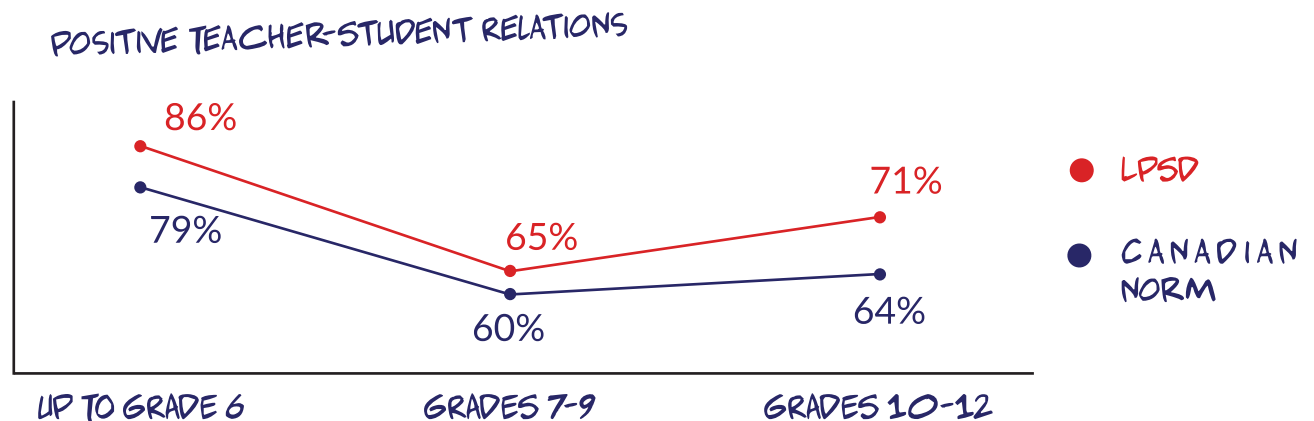
- Consulted with resiliency expert Dr. Michael Ungar to work directly with LPSD staff and partner organizations
 - Provided professional development presentations and direct consultation opportunities for staff and partner organizations
- Developed/built school environments, based on Dr. Ungar's work, that contribute to student resiliency
 - School administration completed an analysis of school environment and developed a school plan that focuses on the '9 things Students Need' book
- Attended the Alberta Mental Health Conference to build staff capacity in the area of wellness

RESULTS WE ARE PROUD OF

One of the positive results that LPSD is proud of is positive teacher-student relationships. Work that has been done at the school level includes:

- School staffs are now aware and focused on the things they can intentionally do to build resilience within their students
- School staffs are identifying and targeting at-risk students. They are expanding and altering the ways they offer services to ensure student needs are being met in and out of the classroom

The following results are from the Tell Them From Me Survey from April 2016:



- Hire school-based mental health professional to build capacity of staff and support student mental health
 - The mental health professional developed and presented mental health specific presentations to staff, as well as worked directly with schools and families to facilitate mental health support
- Hired an athletic coordinator to align athletics and physical wellness opportunities throughout LPSD
- Administered the Tell Them From Me Survey in grades 4-12
 - Schools used this data to create an actionable goal that is related to student engagement and sense of belonging

LITERACY

Our journey began in 2012 when we introduced Fountas and Pinnell to our Grade 1 to 3 teachers as a way to track individual student growth and guide instruction. Since then, Saskatchewan Reads was introduced across the province as a rich resource and companion to the English Language Arts curriculum. It was created based on sound research, specifically in reading, focusing on instructional approaches, assessment and intervention. It showcases the diversity of promising practices that have proven successful in school divisions.

Within LPSD, we have made literacy a priority and are committed to improving our student literacy through effective instructional strategies and assessment, data collection and professional development for teachers. We have also provided more support in and out of the classroom through our literacy coaches.

We are pleased to say that from our beginnings in 2012, we have continually shown growth in the number of students reading at or above grade level. This is a testament to the hard work and dedication of our staff members.

We will continue to work with students and staff in all of our schools, expanding into our middle and high schools. Literacy will always be a priority as we strive to meet the needs of each and every student.

Continuing the journey, we will begin to work on writing skills as well. The reading/writing connection is beyond language. The integration of both enriches and enlivens the world of a child's mind and thinking.



COMMUNICATIONS

Communications has played a key role in the distribution of information, the sharing of successes and the engagement with our families since becoming a Board of Education priority.

Facebook and Twitter accounts were systematically rolled out at the division and school levels in the 2014-15 school year. By 2015-16, accounts had gained major traction as an informative tool for our families and the general public. Here are some statistics from the 2015-16 school year that includes information from the division accounts and all official school accounts:

- Twitter:
 - 1,766 total Tweets
 - 3,791 total followers
- Facebook:
 - 1,844 total Facebook posts
 - 3,473 total likes

LPSD AND THE MEDIA

LPSD has a positive relationship with local media outlets in Lloydminster, which helps the division share information with the general public. Here are some photos of newspaper, television and radio reporters interviewing our students.



LPSD FUN COLOUR RUN





NEARLY 1,200 STUDENTS, STAFF AND FAMILIES PARTICIPATED IN THE 14TH ANNUAL LPSD FUN COLOUR RUN AT BUD MILLER ALL SEASONS PARK!





"Amazing Blue Bird" by Buck Kohl

A SNAPSHOT OF 2015-16

READING, WRITING AND MATH

GOALS:

To support middle school literacy teachers to be able to incorporate practices from Saskatchewan Reads into their teaching methods so they are able to meet the diverse needs of their students in reading.

By June 2020, 80% of Grade 3 students will be reading at or above grade level.

ACTIONS:

To support the teachers to be successful at incorporating Saskatchewan Reads, the following actions were taken:

- Professional Development in modelled and shared reading, on how to analyze data and plan reading instruction accordingly, and implementing teaching strategies for middle schools literacy teachers
- Administration reported monthly on the progress of students and teachers' implementation of Saskatchewan Reads
- Resources were researched for the following year
- Submission of reading achievement data at the middle and end of the school year



To support the reading goal, the following actions were taken:

- 100% of schools designed and deployed a literacy program based on Saskatchewan Reads that was aligned with the Education Sector Strategic Plan
- Provided necessary Professional Development at the school-division level for in-school administrators
- Review and assessment of Saskatchewan Reads deployment with superintendent at School Operations Meetings
- Engagement:
 - Students setting goals in reading
 - Caregivers being informed of their child's reading progress and efforts were made to engage them in improving their child's reading
 - Teachers were given a family literacy brochure to share with families
 - SCCs provided input and support on School Improvement Plans

EARLY YEARS

GOALS:

Throughout the 2015-16 school year, the focus of LPSD was to support Early Years Teachers in the implementation of teaching and learning activities that promoted the development of, and school readiness for, children in Prekindergarten and Kindergarten.

ACTIONS:

- Administered Early Years Evaluation (EYE) and share results with parents in face-to-face meetings
- Ensured that all early years teachers were trained as per ministry standards on the EYE processes
- Used EYE data to inform decisions on interventions for school readiness
- Provided collaboration opportunities for early years teachers with the formation of a Community of Practice
- Implemented administrative walk through and teacher self-assessment tool

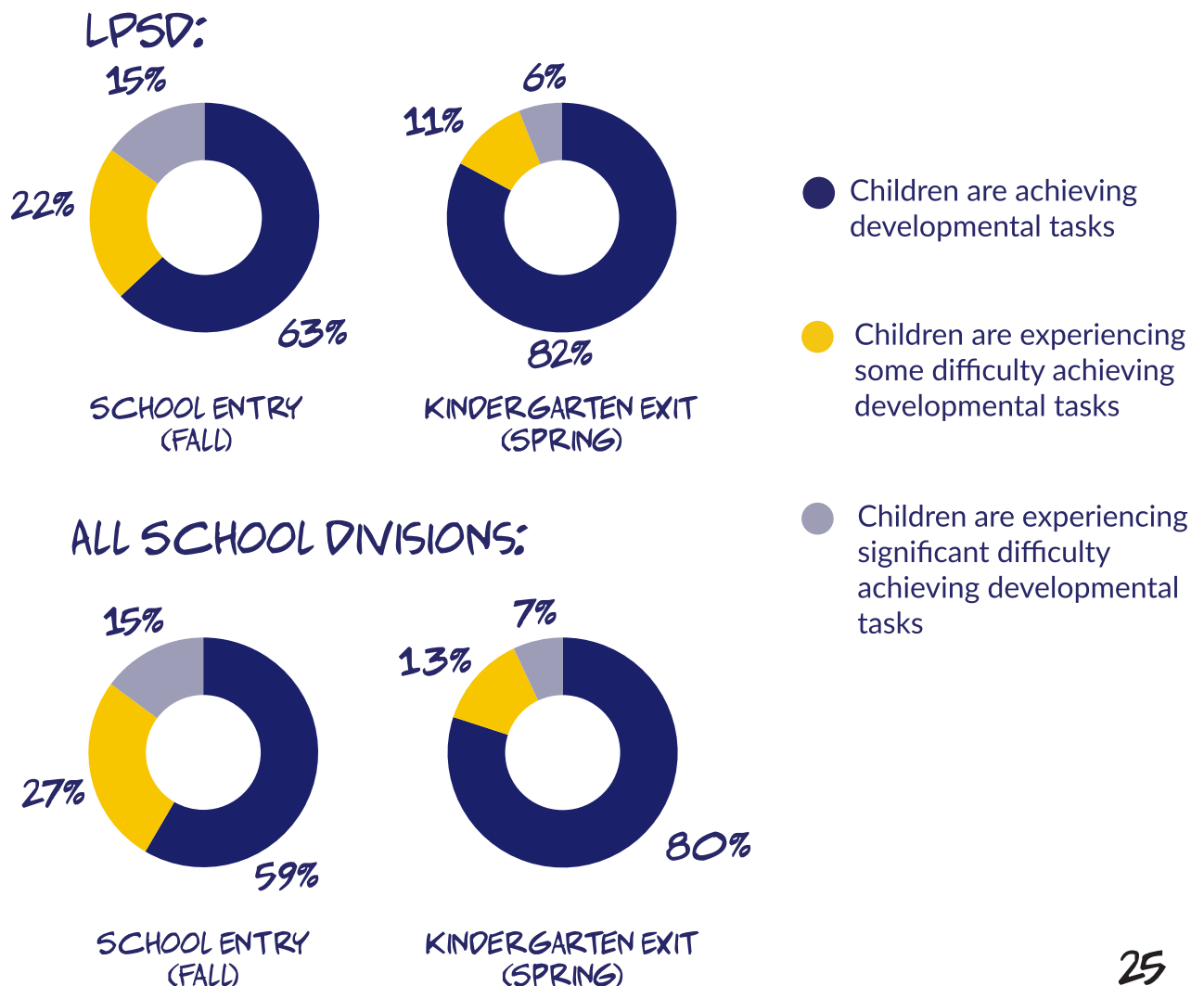


EARLY YEARS EVALUATION

The Early Years evaluation-Teacher Assessment (EYE-TA) is a readiness screening tool that provides information about each child's development and learning with a focus on reading readiness skills. Results from the EYE-TA allow educators and school-based interdisciplinary teams to quickly identify children most likely to require extra support during the Kindergarten year, based on their levels of skill development in five key domains at school entry.

In addition to results for specific domains, children are also assigned a comprehensive score known as a Responsive Tiered Instruction (RTI) level. RTI is a preventative approach that allows educators, school teams and divisions to allocate resources early and continuously, rather than waiting until after children have experienced failure before responding.

The following displays the percentage of students by RTI tiers at the beginning and end of Kindergarten in 2015-16, as well as provincial results:



FNM ACHIEVEMENT

GOALS:

By March 2016, 80% of FNM students in Grades 1-3 will perform at grade level.

By June, 2016, 65% of FNM students will graduate from high school within three years of starting Grade 10.

ACTIONS:

- Collected disaggregated FNM reading and math achievement for Grades 1-3, 4-6 and achievement data for 7-9; course completion for Grades 10-12
- Refined implementation of the Level Literacy Intervention Program
- Developed and implemented a list of strategies and actions to support students of FNM background at the Lloydminster Comprehensive High School
- Engaged LPSD students by participating in Aboriginal cultural activities. Schools planned to host or participate in an Aboriginal Cultural activity or event
- Provided teachers and administrators with opportunities to develop FNM understandings and Treaty Education knowledge through professional development



"Varelse" by Miriam Yukianki

GRADUATION RATES

GOALS:

By June 2016, LPSD will achieve an 87% three-year graduation rate

ACTIONS:

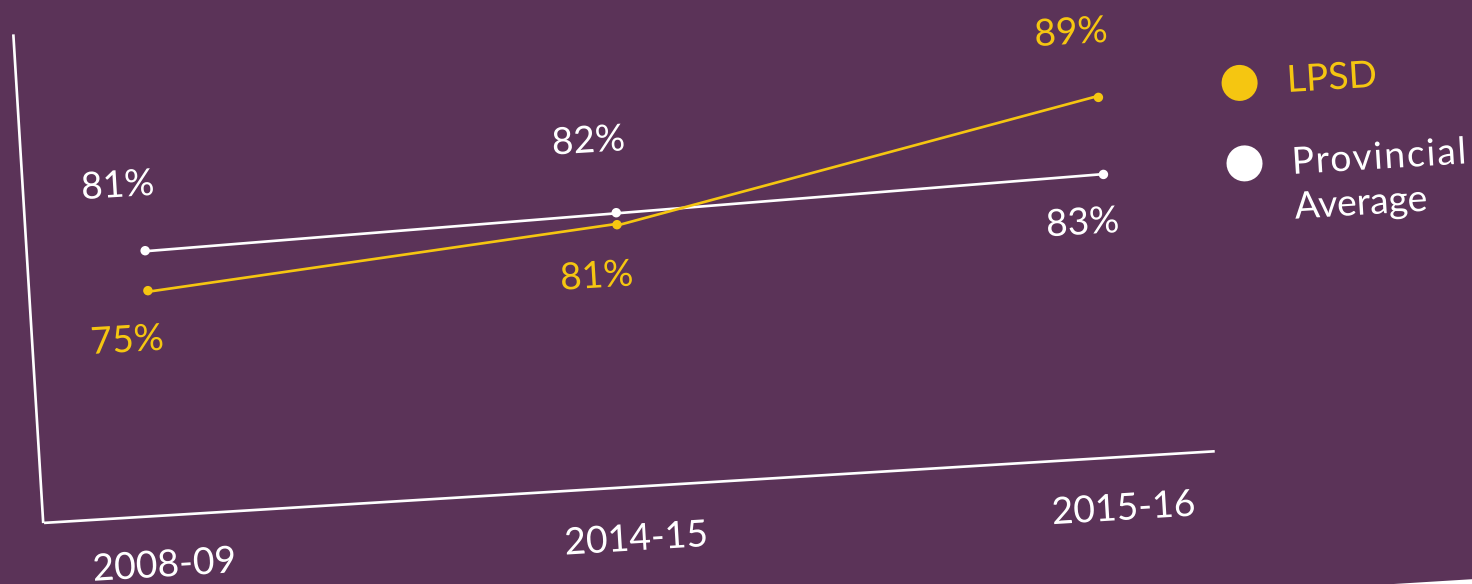
Students entering Grade 9 will develop and maintain a graduation and transition from high school plan.

- Developed school-based procedures to meet the requirements outlined in the LPSD Assessment Administration Procedure
- Investigated alternate pathways to learning at the high school and middle school levels
- Compared cohort lists from the Ministry and LPSD
- Identified former and current LPSD students who would qualify for an adult 12 diploma

EXTENDED-TIME GRADUATION RATES

Some students need more time to complete all the courses necessary to graduate, so they continue in school longer than the typical three years after beginning Grade 10. Extended-time graduation rates are one measure of the responsiveness of the school system.

The following displays the percentage of students in the division who graduated within five years of entering Grade 10, which includes those who graduated on-time, along with provincial results.



TOP AWARD RECIPIENTS

GOVERNOR GENERAL AWARD

Canada's third Governor General, Lord Dufferin, created these academic medals in 1973 to encourage academic excellence across Canada. Throughout the years, they have become the most prestigious award that students in Canadian schools can receive. They are awarded to the student graduating with the highest average. For the 2015-16 school year, **KIRK HAAN** was the recipient of the Governor General Award.

INVESTORS GROUP GREAT YOUTH AWARD

In order to be considered for this award, students must have been involved in school activities and gone far beyond normal expectations, working for the school behind the scenes and received no formal recognition for their work. For the 2015-16 school year, **JENNA KILLAM** was the recipient of this award.

ALBERTA PREMIER'S CITIZENSHIP AWARD

This award is given to students who have supported and contributed to Alberta communities through public service and voluntary endeavours. Only one award is available for each high school in the province. Recipients are selected by a committee and the decisions are based on leadership, citizenship, community service and volunteer work. **MARINA DAY** was the recipient of the Alberta Premier's Citizenship Award this year.

RAYMOND MCLEAN SPIRIT OF YOUTH AWARD

This memorial Award is presented annually by the family of Joseph A. McLean to a deserving student who participated in extra-curricular activities, has an all-around positive character, had sufficient academic standing to enable them to enter a post-secondary institution and is an all-around good citizen. **AYLA CHIPMAN** was the recipient of this award this year.

SCHOLARSHIP RECIPIENTS

- Jenna Killam and Shridhar Patel, Synergy Credit Union
- Thomas Anderson and Kienna Elder, Lloydminster & District Co-Op
- Ashley Mercer, Lions
- Tori Baynton, Kiwanis
- Madison Keen, Lloydminster Elks
- Kyle Kobelka, Lloydminster Construction Association
- Noah Mather and Brea Pitts, Lloydminster Teachers' Association
- Blake Weinrauch, Devon Canada
- Brooklyn Stephens, The Royal Purple of Canada
- Lorien Boyce, Ben J. Gulak Family
- Erika Bendick, Celena Frasz, Kyle Kobelka, Cara • Rish and Joshua Haftner (continuing), Lloydminster Employers Trades (L.E.T.S.)
- Aliya Parenteau and Cara Rish, M.C. College
- Josh Willard, Devin Seguin Memorial
- Tori Baynton and Brette Thomson, R.J. Nelson Family Foundation
- Thomas Anderson, Jack Kemp Community Pillar
- Miranda Moffat, Lloydminster Kinsmen
- Rylee Miller, James H. Leckie
- Charli Hawkins and Kyle Schooley, Marjorie Ranger
- Kirk Haan, Western Communities Foundation
- Ayla Chipman, Schulich Leader Nominee
- Jenna Killam, Chamber of Commerce Bob Mottram Memorial
- Johnathon Brook, Kinettes - Project Hope
- Chantelle Hardes, Friends of the Performing Arts
- Henna Khisro, Stewart Art
- Chantelle Hardes, Jacob Lines, James McCandless,
- Kyle Schooley, Spencer Sperounes and Jordan Steinwandt, Lakeland Academic Excellence



- Joel Hanson, Lakeland College Alberta Blue Cross
- Noah Mather, Lakeland College - The Bill Kondro Entrance
- Jordan Steinwandt, Lakeland College - Politeski Strilchuk Milen, Lawyers
- Chantelle Hardes, Elizabeth Hamp
- Taylor Musgrave, Lloyd Auto Club
- Emily Lines, Bishop Lloyd
- Leif Larson, Citizens of Lloydminster
- Tyler Kohlman, Lloydminster School Division Trust
- Tristen Glover and Aleya Zaidi, Dave Jones
- Marina Day, J. G. Willard
- Tori Baynton, Kathleen Ostrom Memorial
- Joel Hanson, Hazel Miller-Hurt

- Paige Tomkins, Arthur Tildesley
- Erika Bendick and Rachel Trach, Maisie(Verna Jean) Hawkins
- Rebecca Creech, Legion Ladies Margaret Allen
- Kirk Haan, Dr. W.D. Brooker
- Shelby Sorsdahl and Amy Oleksyn (continuing), Glyn Davies
- Lexi Robinson and Amy Wouters, Bea Fisher
- James McCandless, Tyler Musgrave, Kristen Veltikold and Brette Thomson, Allan Craig Essay Contest
- Ayla Chipman, Courtney Campbell, Leif Larson, Shirali Patel, Spencer Sperounes and Zachary Wilson, Allan Craig Foundation

PROGRAMMING

The students in LPSD are diverse. They vary in age, personal circumstances, learning styles, interests, and individual strengths and needs. In order to provide the best education possible for all of our students, LPSD offers a wide range of programs in the 10 schools of the Division.

Central to the program in every school is the provincially mandated core curricula, broad areas of learning and cross-curricular competencies. Classroom instruction is designed to incorporate differentiated instruction, First Nations and Métis (FNM) content, perspectives and ways of knowing, and the adaptive dimension. Additionally, each school in the Division offers specialized programming that responds to the needs of its students.

WHAT WE OFFER:

- Alternative programming for vulnerable students
- Community school programming
- Core French instruction
- Distance education
- English as an Additional Language programs
- Technical and vocational programs
- Hockey Academy
- Music and band programming
- Nutrition programs
- Prekindergarten programs
- Technology-enhanced learning

ADDITIONAL SERVICES AND SUPPORTS OFFERED BY SPECIALIZED LPSD STAFF:

- Literacy Coaches and Technology Consultants
- Educational psychologist services
- English as an Additional Language lead teachers
- Occupational Therapist
- Speech and language pathologists
- Student Counsellors
- Targeted Skills Teachers
- FNM Lead Teachers

ONGOING INITIATIVES:

- Early reading intervention
- Skills Canada
- Student leadership
- Soundfield Systems
- Job safety
- Hockey Academy
- Technology Plan
- Avery Outreach School
- FNM Cultural Activities and Events
- Friends of the Performing Arts
- Prekindergarten
- Student and staff wellness



RELATIONSHIPS

LPSD AND THE COMMUNITY

LPSD is an integral part of community life in west-central Saskatchewan. The Division, as a whole, and individual schools are linked to the broader community in a multitude of ways. The Board of Education places strong emphasis on community and parent involvement and on community partnerships.

COMMUNITY AND PARENT INVOLVEMENT

Research has shown that students achieve at higher levels in school when their parents/guardians and other community members are involved in education. The schools of LPSD all have programs and initiatives to encourage community and parent involvement. These programs vary from school to school and are, therefore, unique to each school community.

What all LPSD schools have in common is the importance of School Community Councils (SCCs) as a mechanism for connecting community and school. SCCs play a role in governance and most have established formal processes to foster community and parent involvement.

In total, LPSD had more than 1,000 parent volunteers throughout 2015-16.

OUR COMMUNITY PARTNERS:

- Agland
- Arby's Restaurant and Drive Thru
- Boardom
- Canadian Tire
- Chatters Hair Salon
- Cliff Rose for Clothes
- Foremost Lloydminster
- Lloydminster and District Co-op
- Denham Chrysler Ltd.
- Devon Energy
- Diamond 7 Meats
- Fabutan Sun Tan Studios
- Factory Sports Outlet
- Family Pizza
- First General Services
- 106.1 The GOAT
- The Hair Studio
- Hey Sugar! Bake Shop
- Heavy Crude Hauling LP
- Indulgence Body Care Studio
- La-Z-Boy Gallery
- Lloydminster Kiwanis Club
- Lloydminster Animal Hospital
- Lloydminster Source
- LLOYD FM
- Mark's Work Warehouse
- May Cinema 6
- Meridian Booster
- Papa John's Pizza
- Paramount Flooring
- Moonlight Photography
- The Root: Community Emporium
- Redhead Equipment
- RE/MAX
- Safeway
- Second Cup
- Shep's Sports Centre
- Sobeyes
- Staples
- Starbucks
- Subway
- The Real Canadian Superstore
- Tasty K's
- Trophy Gallery
- Tunes Music & Audio
- Vintage Music
- Wayside Dental Centre
- Westlake Dental
- Lloydminster and District SPCA
- Lloydminster Chamber of Commerce
- Just Kruzin Specialty Car Club
- Musgrave Agencies Ltd.
- Walmart
- Mr. Pet's
- Lloydminster Water World
- Inclusion Lloydminster
- Lloydminster and Area Drug Strategy
- Alberta and Saskatchewan Child and Family Services
- Midwest Family Connection
- Home Depot
- Lloydminster Bobcats
- Lloydminster Gospel Fellowship
- The Lloydminster Sexual Assault and Information Center
- Interval Home
- A&W Restaurant
- Prairie North Health Region
- Grit Industries Inc.
- Lloydminster Minor Hockey Association
- Relay Distributing
- Your Dollar Store With More
- Metaltek Maching Ltd.

COMMUNITY PARTNERSHIPS

LPSD and individual schools within the division have established a range of formal and informal community partnerships in order to promote student learning and ensure that students' school experience is positive and successful. Schools in the division use an integrated services model in which they partner with social service agencies to ensure that students' physical, social and psychological needs are met. This approach recognizes that students who are healthy and happy have greater capacity to learn and to succeed in school and in life.

Several schools in the division have partnered with local businesses. The purpose of these

partnerships is to enrich students' educational experience and to help them connect what they learn at school to the world of work.

LPSD provided leadership in the development and chairing of HUB meetings throughout the school year. This framework unites Prairie North Regional Health, AB/SK Social Services, Lloydminster RCMP, AB/SK Ministries of Justice and Corrections and Alberta Works to serve individuals and families who are at risk.

Partnerships were also formed between Thunderchild First Nations for a high school project and Lloydminster Native Friendship Centre for an elementary school project, which began in the 2014-15 school year and continues today.

- Champion Technologies Ltd.
- Friends of the Performing Arts
- McDonald's Restaurant
- SCC Parents Group
- Ann Campbell
- Synergy Credit Union
- Wilkinson, Livingston Stevens LLP
- Wickham Nurseryland
- Investors Group
- Lakeland College
- Dr. Cooke Extended Care
- Points West Living
- Vic Juba Community Theatre
- ADM
- Lloydminster Exhibition Association
- Servus Credit Union
- Lloydminster Learning Council Association
- Spiro's
- Living Faith Pentecostal
- Mental Health and Addictions
- RCMP
- Lloydminster Native Friendship Center
- Thorpe Recovery Center
- Lloydminster KidSport
- Dr. Scribante
- Lloydminster Community Youth Center
- Canadian Cancer Society
- Canadian Red Cross
- Newcap Television
- Leisure Center
- Lloydminster Fire Department
- Image Press
- Servus Sports Center
- Panago Pizza
- Westridge Buick GMC
- Boundary Ford
- Weir Animal Hospital
- Olive Tree
- First Baptist Church
- Salvation Army
- Cujo Conditioning
- Explosion Gymnastics
- Servus Credit Union
- Lloydminster Rescue Squad
- ATCO
- Big Brothers Big Sisters
- Edgar and Lynda Oliver
- Free the Children
- In Motion Saskatchewan
- Jump Start
- Junior Achievement
- Kidsport
- Kinds Help Line
- L&L Oilfield
- Libbie Young Centre
- Scared Straight
- Scat Pest Control
- WPD Ambulance
- CanSafe Safety Services Inc.
- Century 21
- Coldwell Banker
- Heavy Crude Hauling
- Foremost Lloydminster
- Magnum Energy Services
- Moose Lodge
- City of Lloydminster
- M&M Meat Shop
- Creative Realty
- TJ Altman Investors Group
- Leckie & Associates

PROFILE

ENROLMENT COUNTS

In the 2015-16 school year, 4,157 students (Prekindergarten to Grade 12) were enrolled in LPSD schools. This is compared to the 4,077 students in 2014-15 and the 4,044 in 2013-14.

Additionally, in the 2015-16 school year, a total of 472.4 full-time equivalent employees (FTE), which included nearly 250 FTE classroom teachers, approximately 117 FTE other educational staff and just under 39 FTE employed in plant operations and maintenance.



MORE THAN
90 STUDENTS
PARTICIPATED IN THE
LPSD SKI LOppet
CROSS-COUNTRY
SKI RACES THIS
YEAR.



SELF-IDENTIFIED FNM

A student's FNM identity is established through self-identification. In total, LPSD had 515 FNM students in the 2015-16 school year. In 2014-15, LPSD had 489 FNM students and 484 in 2013-14.

ENGLISH AS AN ADDITIONAL LANGUAGE

In 2015-16, there were 113 English as an Additional Language (EAL) learners in the LPSD system. In 2014-15, there were 85 EAL learners and 81 in 2013-14.



GOVERNANCE

THE BOARD OF EDUCATION

LPSD is governed by a seven-person elected Board of Education. The Education Act, 1995 gives the Board the authority to “administer and manage the educational affairs in the school division” and to “exercise general supervision and control over the schools in the school division.”

Board members are elected at large and reside in the city of Lloydminster. There are no subdivisions in LPSD.

WHILE AN ELECTION DID TAKE PLACE ON OCT. 26, 2016, THE BOARD OF EDUCATION MEMBERS AS OF SEPT. 1, 2016 INCLUDE: DAVID THOMPSON, KAROLINE KENNEDY, CATHY CORNET, ERIC BLOCH-HANSEN, JOY WAREHAM, YANA KNIGHT AND CHRISSY GEE.

SCHOOL COMMUNITY COUNCILS

The Board of Education has established a School Community Council (SCC) for each of the 10 schools in LPSD.

The Education Regulations, 1986, require school divisions to undertake orientation, training, development and networking opportunities for their SCC members. In 2015-16, LPSD conducted a forum for this purpose with all of its 10 SCCs and executives.

The regulations also require SCCs to work with school staff to develop an annual school Learning Improvement Plan (LIP) that is aligned with the school division's strategic plan and to recommend that plan to the Board of Education. In 2015-16, all 10 of the division's SCCs reviewed and signed these plans.

SCCs are also expected to facilitate parent and community participation in planning and to provide advice to the Board of Education, the school's staff and other agencies involved in the learning and development of students. We had two meetings in 2015-16, once in the Fall and once more in the Spring.

The advice SCCs give to the Board of Education encompasses policies, programs and educational service delivery; the advice they give to the school staff related to the school's program.

SCCs enable the community to participate in educational planning and decision making, while also promoting shared responsibility for learning among community members, students and educators.

All 10 of SCCs in LPSD are made up of the required number of elected and appointed members, as outlined in The Education Regulations, 1986. The actual number varies from one SCC to another.



"The Light of Darkness" by McKenzie Hassal



"Big Eyes" by Haylee Langille

FACILITIES AND TRANSPORTATION

FACILITIES

LPSD facilities include:

- Ten schools located within the City of Lloydminster (See Page 6 for the full list of schools and contact information).
- The Division's head office is located in Lloydminster. The main floor of the building is 38 years old, with a second floor being constructed eight years ago.
- The Division's maintenance shop is 31 years old and contains caretaking and maintenance supplies, as well as school furniture and equipment. The building is also home to the Transportation Department.

Various upgrades and renovation projects occurred throughout LPSD during the 2015-16. See below to view the list of these projects.

LPSD takes great pride in the maintenance and upkeep of all of the buildings in the Division. Minor repairs and maintenance are done on an as-needed basis and a painting schedule ensures that all schools are always looking fresh. All buildings are cleaned on a regular basis, with major cleaning, such as washing walls, shelves and floor finishes occurring during the summer months.

INFRASTRUCTURE PROJECTS

LCHS

- Canopies and bus lane
- Fieldhouse
- Dust Collection System
- Replacement of range hoods

JACK KEMP COMMUNITY SCHOOL

- Relocate portable

QUEEN ELIZABETH SCHOOL

- Roofing project phase 1

RENDELL PARK ELEMENTARY SCHOOL

- Playground phase 1
- Stage flooring repairs

WINSTON CHURCHILL SCHOOL

- Stage flooring repairs

BISHOP LLOYD MIDDLE SCHOOL

- Millwork in art room
- Bathroom renovation

E.S. LAIRD MIDDLE SCHOOL

- Exterior Lighting replacement

BARR COLONY SCHOOL

- Exterior Lighting replacement
- Furnace repairs in portable

DIVISION OFFICE

- Basement repairs

TRANSPORTATION

LPSD owns and operates 21 buses. There are 13 three-tier routes that are ran on a daily basis and six Prekindergarten routes that run Monday through Thursday. Agreements are in place with the Northwest School Division in Saskatchewan and Buffalo Trail Public Schools division in Alberta to provide busing services to eligible rural students attending school in Lloydminster.

LPSD also has an agreement with the local Handi-Van to transport students with special needs who are unable to ride on a regular bus.

The Division provides transportations services for eligible students within the Lloydminster city limits to their designated school based on the following distances:

- Prekindergarten: Door-to-door service to their designated school
- Kindergarten to Grade 6: If they live 0.6 kilometres or more from their designated school
- Grades 7-9: If they live 0.9 kilometres or more from their designated school
- Grades 10-12: If they live 1.5 kilometres or more from their designated school

USING 21 BUSES
AND TRAVELLING
674.3 CUMULATIVE
KILOMETRES, LPSD
TRANSPORTED MORE
THAN 1,380 STUDENTS
DAILY BY BUS IN
2015-16!



FINANCE

In 2015-16, LPSD's largest expense was instruction, totalling 78% of the division's total budget. Instruction includes salaries and benefits for teaching and other staff who work directly with students, as well as resource materials and classroom supplies.

The second largest expense was for facilities – also known as plant operations and maintenance– which includes day-to-day operations of the schools and their upkeep. In total, this expense took up 10% of LPSD's budget for the 2015-16 school year.

The largest source of revenue for the division was provincial grants at 65%, followed by property taxes at 31%.

OPERATIONAL SPENDING

As part of the ESSP, school divisions from across Saskatchewan are expected to implement a sector-wide approach to find efficiencies and increase value added in order for the sector to be responsive to the challenge of student needs by August 2020.

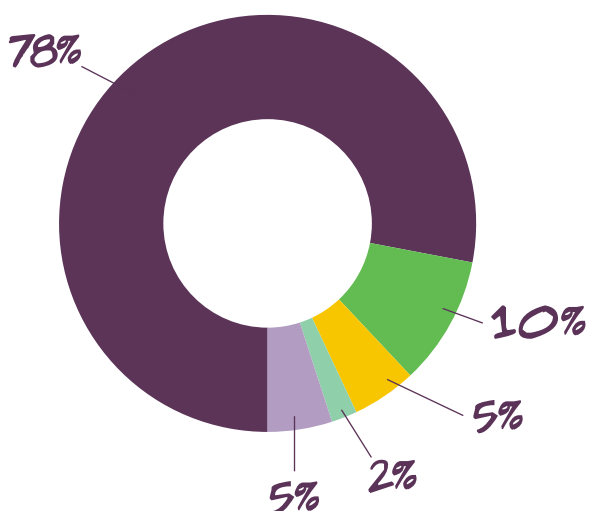
LPSD's goal is to have an operational budget that is predictable and sustainable. As well, Practices and policies within the organization will be efficient and effective while being flexible to accommodate student and staff needs.

Through this priority, LPSD undertook a number of actions during the 2015-16 school year, which include:

- Created and implemented a revised annual budget creation process that is based on Board priorities and financial assumptions
- Enhanced the understanding of the LEAN leadership philosophy on the Division Leadership Team
- Developed a management strategy for curricular and extra-curricular travel
- Developed a management strategy for noon hour supervision
- Implement Enterprise Risk Management

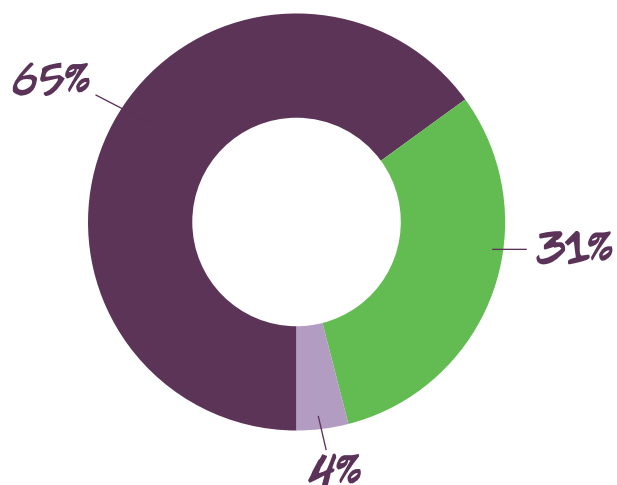


EXPENSES:



- Instruction (\$35.9 million)
- Plant (\$4.4 million)
- Governance and Administration (\$2.4 million)
- Transportation (\$1.1 million)
- Other (\$2.1 million)

REVENUES:



- Grants (\$27.6 million)
- Property Taxation (\$12.9 million)
- Other (\$1.7 million)



LLOYDMINSTER PUBLIC SCHOOL DIVISION

5017-46 STREET,
LLOYDMINSTER, AB, T9V 1R4
780-875-5541

WWW.LPSD.CA
@LLOYDPUBLIC
WWW.FACEBOOK.COM/LLOYDPUBLIC
#MYLPSD